



## RAD Presse-étoupe pour câbles armé

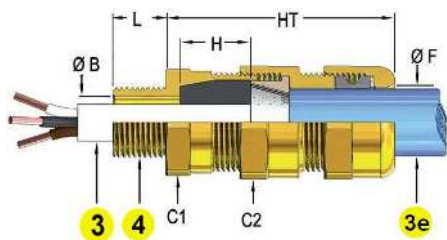
### Mode de protection:

Type de protection: Ex e II Ex d IIc Ex tD Ex e I Ex d I  
 Indice de protection: IP66 / 68\*  
 Zones : 1-2-21-22  
 Certificats: INERIS 06 ATEX 0014X  
 IECEx IEC 10.0010 X  
 POCC IT.A 45.B04931 RTN



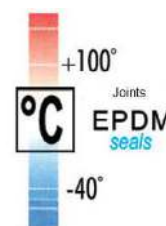
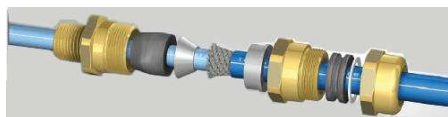
### Description:

RAD, Presse-étoupes ATEX pour câbles armé pour zones gaz (1&2) et poussière (21&22).



Concevoir le code produit :

1 + 2 + 3 + 4 + 5 + 6



5	EP: EPDM	6	ON: Laiton nickelé
			S6: Inox AISI316L

\*sur demande

1	2	3	3e	Tolérance standard	Tolérance Réduite	Filetage cylindrique			4			Poids (g)	øF	HT	H	C1		C2	
						ISO 262	ISO 228	DIN 40430	UNI 6125	NPT	ISO7								
RAD	16	4 ÷ 7 7 ÷ 10	5 ÷ 10 10 ÷ 15	0 ÷ 0.5	0.5 ÷ 0.75	M16x 1.5	3/8"	Pg11	1/2"	3/8"	3/8"	126	16	58	20	24	26	24	26
RAD	20	5.5 ÷ 8 8 ÷ 10.5 10.5 ÷ 13	10 ÷ 15 15 ÷ 19	0 ÷ 0.5	0.5 ÷ 1.25	M20x 1.5	1/2"	Pg13.5	1/2"	1/2"	1/2"	228	20	64	20	30	33	32	35
RAD	25	10 ÷ 10.5 10.5 ÷ 13 13 ÷ 15.5 15.5 ÷ 18	15 ÷ 20 19 ÷ 24	0 ÷ 0.5	0.5 ÷ 1.25	M25x 1.5	3/4"	Pg16	3/4"	3/4"	3/4"	264	25	64	20	35	38	36	39
RAD	32	13 ÷ 15.5 15.5 ÷ 18 18 ÷ 21 21 ÷ 24	20 ÷ 26 25 ÷ 31	0 ÷ 1	1 ÷ 1.6	M32x 1.5	1"	Pg21	1"	1"	1"	484	32	83	25	42	47	45	49
RAD	40	21 ÷ 24 24 ÷ 27 27 ÷ 30	26 ÷ 32 31 ÷ 37	0 ÷ 1	1 ÷ 1.6	M40x 1.5	1 1/4"	Pg 29	1 1/4"	1 1/4"	1 1/4"	576	38	83	25	48	53	50	55
RAD	50	24 ÷ 27 27 ÷ 30 30 ÷ 33 33 ÷ 36	31 ÷ 37 36 ÷ 43	0 ÷ 1	1 ÷ 2	M50x 1.5	1 1/2"	Pg36	1 1/2"	1 1/2"	1 1/2"	730	44	83	25	55	60	57	62
RAD	63	36 ÷ 39 39 ÷ 42 42 ÷ 45	42 ÷ 48 47 ÷ 53	0 ÷ 1	1 ÷ 2	M63x 1.5	2"	Pg42	2"	2"	2"	961	54	83	25	68	74	67	73
RAD	75	45 ÷ 48 48 ÷ 51 51 ÷ 54	52 ÷ 58 52 ÷ 64	0 ÷ 1	1 ÷ 2	M75x 1.5	2 1/2"	Pg48	2 1/2"	2 1/2"	2 1/2"	1392	65	83	25	80	86	80	88
RAD	90a	54 ÷ 58 58 ÷ 62	64 ÷ 72	0 ÷ 2	2 ÷ 2.5	M90x 2	3"	/	3"	3"	3"	3026	74	115	30	100	107	100	107
	90b	60 ÷ 64 64 ÷ 68	70 ÷ 78									2432	80	115					