



## CCA Enclosure IIC with screw cover

### Protection mode:

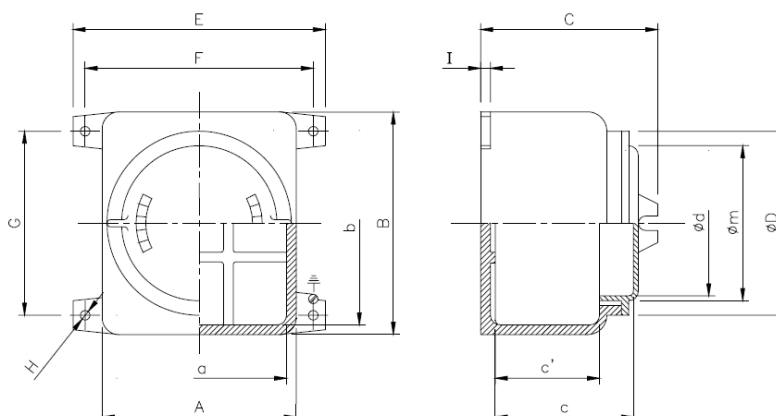
Type of protection: II 2 GD Ex d IIC T6÷T4 /  
Ex tD A21  
Class of temperature: T6  
Protection degree: IP66  
Ambient Temp : up to +40°C  
Zones : 1-2-21-22



### Description:

The junction enclosures series CCA... are normally used for connection and junction of cable conduits. Enclosure in light alloy with screwed cover. External screws in stainless steel. RAL 2004 internal anti-condensate coating, RAL 7000 external epoxy coating with embossed effect. Ambient temperature up to +40°C. (on request: -50°C +80°C).

### Technical drawing:



### Dimensions table:

Type	External dimensions (mm)					Internal dimensions (mm)						Fixing (mm)				Weight (Kg)
	A	B	C	D	E	a	b	c	c'	d	m*	F	G	H	I	
CCA 0	150	150	120	130	195	122	122	90	59	102	112	175	125	8	11	2.9
CCA 1	165	165	135	145	210	137	137	100	67	117	127	190	140	8	12	3.5
CCA 2	190	190	160	166	235	160	160	122	89	135	147	215	165	8	13	5.6
CCA 3	225	255	190	200	290	193	223	145	107	165	176	260	220	10	14	10.4
CCA 4	270	305	225	240	330	238	273	160	130	200	216	300	270	10	16	14.6
CCA 5	340	260	260	270	360	264	304	190	156	228	245	330	300	10	18	21.3

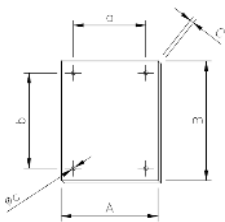


## CCA Enclosure IIC with screw cover

### Cable entries :

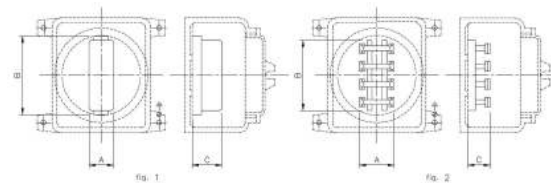
Type	Sides	1/2"	3/4"	1"	1.1/4"	1.1/2"	2"	2.1/2"	3"	4"
CCA 0	Long side	2	2	2	1	1	-	-	-	-
	Short side	2	2	2	1	1	-	-	-	-
CCA 1	Long side	3	2	2	1	1	1	-	-	-
	Short side	3	2	2	1	1	1	-	-	-
CCA 2	Long side	3	3	2	2	2	1	1	-	-
	Short side	3	3	2	2	2	1	1	-	-
CCA 3	Long side	5	4	3	3	2	2	1	1	-
	Short side	4	3	3	2	2	1	1	1	-
CCA 4	Long side	5	4	4	3	3	2	2	2	1
	Short side	5	4	3	3	2	2	1	1	1
CCA 5	Long side	6	5	4	3	3	3	2	2	2
	Short side	5	4	4	3	3	2	2	2	1

### Internal plate :



Code	Enclosure	Dimensions (mm)			Internal fixing			Weight (g)
		A	B	C	a	b	Ø c	
PC 0	C ... 0	105	105	2	45	90	5	160
PC 1	C ... 1	120	120	2	48	100	6	210
PC 2	C ... 2	140	140	2	58	120	6	380
PC 3	C ... 3	160	190	2	70	155	7	620
PC 4	C ... 4	200	230	2	90	190	7	900
PC 5	C ... 5	215	265	2.5	110	215	7	1170

### Terminals :



Terminal board		Enclosures series CCA ...								
Poles x sect. mm <sup>2</sup>	Max Amp for mm <sup>2</sup>	Dimensions			CCA 0	CCA 1	CCA 2	CCA 3	CCA 4	CCA 5
		A	B	C						
3 x 16	3	63	98	27						
4 x 16	3	63	107	27						
3 x 35	3	86	122	33						
4 x 35	3	86	134	33						
3 x 70	2.5	103	140	41						
4 x 70	2.5	103	185	41						
3 x 95	2	124	185	48						
4 x 95	2	124	232	52						
3 x 160	2	174	232	48						

Bornes	Nombre de bornes max							Dimensions max bornier			
	Section mm <sup>2</sup>	2.5	4	6	10	16	35	70	A	B	C
Max Amp x mm <sup>2</sup>		5	5	5	3	3	3	2.5			
CCA 0	14	13	11	9	7	3	2	75	120	80	
CCA 1	16	15	12	10	8	4	3	75	135	80	
CCA 2	20	18	16	12	10	6	5	75	155	80	
CCA 3	30	27	22	18	15	10	8	75	216	80	
CCA 4	38	35	28	23	19	12	10	75	265	80	
CCA 5	45	41	33	27	22	15	12	75	306	80	