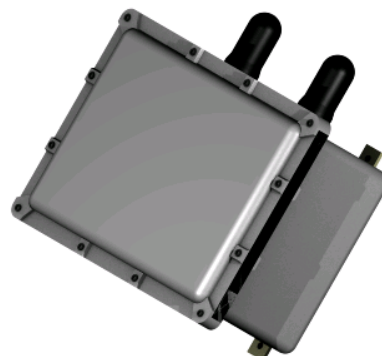




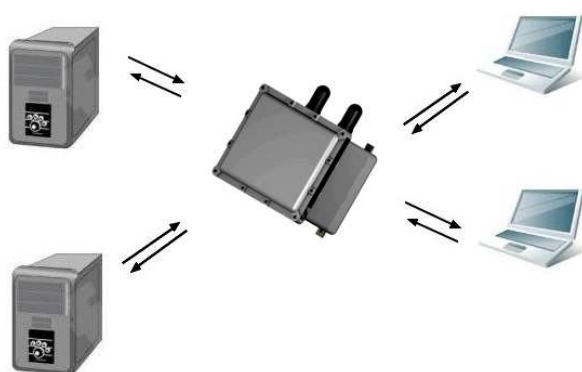
## CCF5-AP1240G ATEX enclosure access point CISCO

### Protection mode:

Type of protection: II 2 G Ex d IIB+H<sup>2</sup>  
Class of protection: T6-T3  
Protection degree: IP66  
Ambient Temp: -20 / +40°C



### ATEX WIFI Access point - CISCO AIRONET 1240G



The CCF5-AP1240G **CISCO wireless access point** is an ideal solution for industrial applications that are hard and too expensive to wire, or use mobile equipment that connects to your network.

Using the radio and network management features of the **Cisco Unified Wireless Network** for simplified deployment, the CCF5-AP1240G extends the security, scalability, reliability, ease of deployment, and manageability available in wired networks to the wireless LAN (WLAN).

### Technicals data:

#### 802.11g radios

The access points provide 54 Mbps of capacity and compatibility with older 802.11b clients.

#### Support for both local and inline power, including IEEE 802.1af PoE

- Power can be supplied using the Ethernet cable, eliminating the need for costly electrical power line runs to remotely installed access points.
- The access points can be powered by IEEE 802.3af PoE, Cisco Inline Power switches, single-port power injectors, or local power.

#### Hardware-assisted AES encryption

The access points provide high security without performance degradation.

#### Data rates supported

802.11g: 1, 2, 5.5, 6, 9, 11, 12, 18, 24, 36, 48, and 54 Mbps



## CCF5-AP1240G ATEX enclosure access point CISCO

### Security:

- Authentication
- Security standards
- Wi-Fi Protected Access (WPA)
- WPA2 (802.11i)
- Cisco Temporal Key Integrity Protocol (TKIP)
- Cisco Message Integrity Check (MIC)
- IEEE 802.11 WEP keys of 40 and 128 bits
- 802.1X Extensible Authentication Protocol (EAP) types:
  - EAP Flexible Authentication via Secure Tunneling (EAP FAST)
  - Protected EAP Generic Token Card (PEAP GTC)
  - PEAP Microsoft Challenge Authentication Protocol Version 2 (PEAP MSCHAP)
  - EAP Transport Layer Security (EAP TLS)
  - EAP Tunneled TLS (EAP TTLS)
  - EAP Subscriber Identity Module (EAP SIM)
  - Cisco LEAP
- Encryption:
  - Advanced Encryption Standard Counter Mode with Cipher Block Chaining Message Authentication Code Protocol (AES CCMP) encryption (WPA2)
  - TKIP (WPA)
  - Cisco TKIP
  - WPA TKIP
  - IEEE 802.11 WEP keys of 40 and 128 bits

### Network standard

IEEE 802.11b and 802.11g

### Antenna connectors

- 2.4 GHz
- Dual RP-TNC connectors

### Status LEDs

- Status LED indicates operating state, association status, error or warning condition, boot sequence, and maintenance status.
- Ethernet LED indicates status of activity over the Ethernet.
- Radio LED indicates status of activity over the radio.

### PoE

Power sourcing equipment is compliant with Cisco Inline Power or IEEE 802.3af, and provides at least 12.94W at 48 VDC.

### System memory

- 32 MB RAM
- 16 MB flash memory

### Input power requirements

- 100 to 240 VAC; 50 to 60 Hz (power supply)
- 36 to 57 VDC (device)