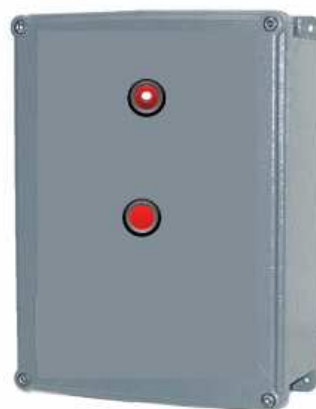




## CSP/AM en milieu poussiere

### Protection mode:

Type of protection: II 2 D - EEx e II / EEx ed II  
 Class of temperature: T6-T5  
 Protection degree: IP 65  
 Certificate: INERIS 05 ATEX 0043



### Description:

The CSA/AM enclosures are square or rectangular shaped and have the cover with gasket which is connected to the body of the enclosure by screws.  
 Wall thickness = 7mm

### Technicals data:

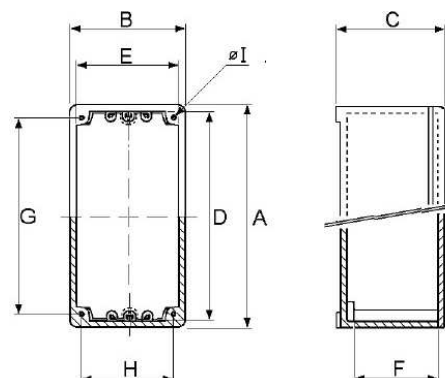
#### Materials:

Body and cover: aluminium alloy.  
 Gasket: neoprene.  
 Screws: stainless steel.

#### On request:

Rail, Equipment plate, Terminals.  
 Components.  
 Breathing / draining valve.  
 Window for instrument visualization.  
 Inhibiting treatments for salt mist.  
 Version for Intrinsic Safety circuits blue RAL 5012.

### Technical drawing:



Type	Dimensions (mm)						Fixing (mm)		
	External			Internal			G	H	I
	A	B	C	D	E	F			
CSP/ AM 1A	110	110	85	100	100	62	94	94	8
CSP/ AM 1B	147	147	100	137	137	78	131	131	8
CSP/ AM 1C	170	110	85	160	100	62	154	94	8
CSP/ AM 2A	260	128	174	246	114	154	210	108	M6
CSP/ AM 2B	260	260	174	246	246	154	240	210	M6
CSP/ AM 3A	305	147	100	295	137	78	285	127	10
CSP/ AM 3B	305	230	100	295	220	78	285	210	10
CSP/ AM 3C	305	230	180	295	220	153	285	210	10
CSP/ AM 3D	326	260	174	312	246	154	306	210	M6
CSP/ AM 3E	393	260	174	379	246	154	373	210	M6
CSP/ AM 4	470	305	180	460	295	153	450	285	10
CSP/ AM 5	480	480	210	451	451	143	460	430	M12
CSP/ AM 6	620	305	180	610	295	153	600	285	10