



## EFD-E1 Push buttons series

### Protection mode:

Type of protection: EX II 2GD EEX d IIB + H2  
 Class of temperature: T6  
 Protection degree: IP65  
 Ambient Temp : -20 à +40°C  
 Zones : 1-21-2-22

### Description:

This is a special model of EFD1 with an emergency button and break glass, complete of external accessories (chain, hammer, glass stop ring, etc) with RAL 3000 external epoxyvinil coating.

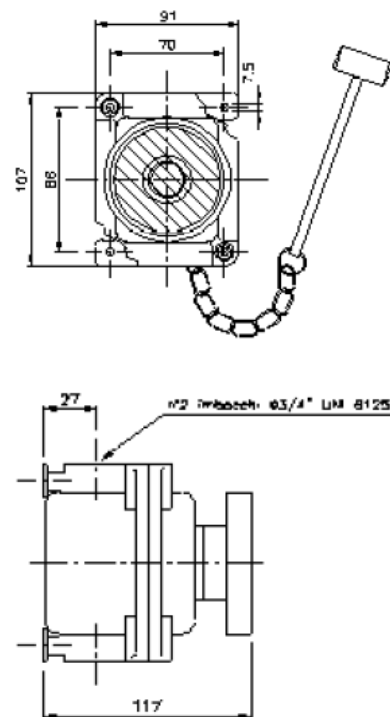
**Manual broken window E1**  
**Automatic broken window E0**



### Technicals data:

Technical characteristics			
Materials	Body and cover: aluminium alloy. Screws in stainless steel.		
Temp :	-20°C à +40°C ( -40 /+50°C)		
Protection degree	IP65		
Inhibiting treatment :	Standard epoxy painting Grey RAL 7000		
<b>Electrical elements</b>			
Rated insulation voltage	Ui 660V ( CEI 60947-5-1) 300V ( CSA C22-2 n.14) Ith 10A		
Dielectric strenght	3KV ( 1s)		
Insulation resistance	2 Mohm min. ( 500VCC)		
Initial contact resistance	<= 25 m. ohm		
Short circuits protection	Fuse gl 10A 500V 10.3 x 38 II 100KA		
Terminals marking	CENELEC EN 50013		
Connections	Self cleaning type EN01 (NC) EN10 (NO)		
Operation frequency	1800 opérations/hours maxi		
Utilization categories	AC15 Voltage(V)-24-130-230-400 Current (A) 10-6.5-4-2.5 DC13 Voltage (V) -24-110 Current (I) -1.5-0.5		
<b>Eléments</b>	<b>Symbol</b>	<b>Contact</b>	<b>Weight</b>
E0	E0	1NO+1NC	1050
E1	E1	1NO+1NC	1050

### Technical drawing:



**EFD1 -E1**  
 Enclosure EFD1  
 Element 1 : manual broken window.

Type	Eléments	Cable entries		Weight Gr
		Ø	Nbres	
EFD1	1	3/4"	2	1050