



Limit Switch ATEX

CESI 01 ATEX 023

Zones 1, 2, 21 et 22,
EExd IIB+H² T6 IP65 T85°C
EExd IIB+H² 65°C IP65 T85°C

Description:

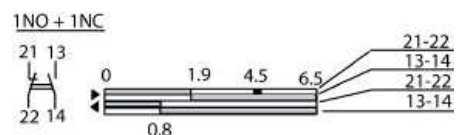
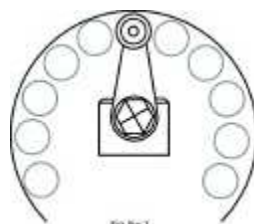
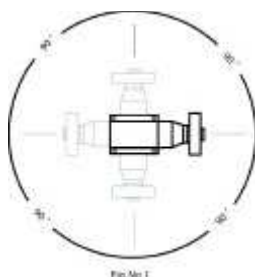
LS series are used and implanted on hazardous area gas and dust. Possibility of entry **dérivation by the 3 sides**. Economic and strong, with a large choice of rotative head. Possibility to 2NO + 2NC on the contacts, positive opening.



Technical data:

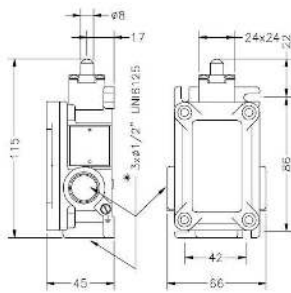
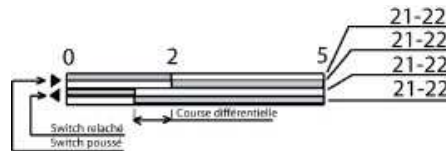
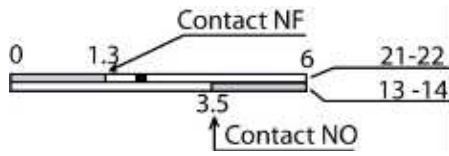
Housing : Light cast aluminium alloy with epoxy painting RAL7000. Heads in polyester stainless metal, ASI 303 OT 58UNI 4514.
Screws in stainless steel
Rotative head per 90°
Adjustment lever: Possibility to rotated switch per 10°
Maximum operations number: 20/mn
Cables entry
3 x 1/2" NPT UNI 6125 (others on request)
Amb Temp: de -40°C à +85°C
Fixing : 86 x 42mm
Electrical data :
Contacts: conform EN 50.013 Standard, articles C2,C31,C51 instant action article C41, C61, C71, C91, low action
Min speed trigger : 1mm/sec.
Contacts to positive opening: Conform to IEC 947-5-1, EN 60.947-5-1 et CEI 17-45-F 1914 Standard
Contact security: Use LS series with symbols:
Contact : I_n=10A, U_i 500Vac 600Vdc,
Protection C/C: fusible 10A
Conductor : 1.5mm² mini, I_{max} 5A/mm²
I AC :(56-60Hz) U_e (V) 24-130-240-400

Technical drawing:

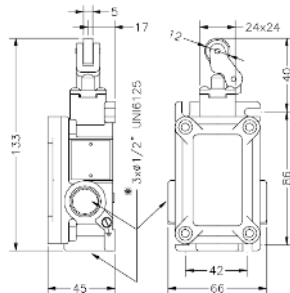




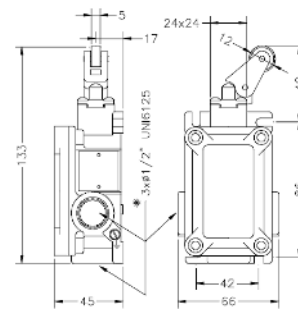
Limit Switch ATEX



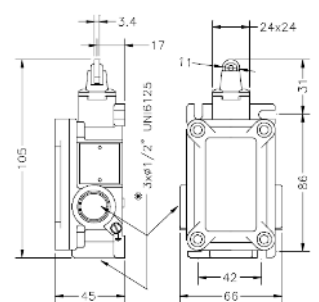
LS5101



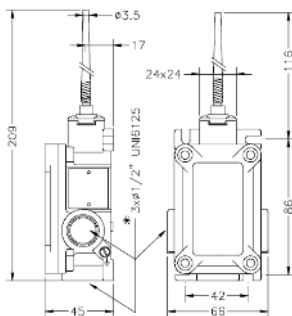
LS5102



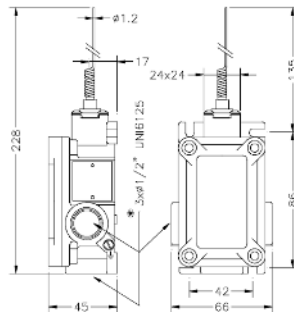
LS5105



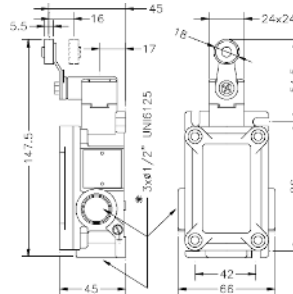
LS5115



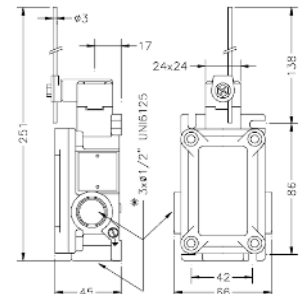
LS5120



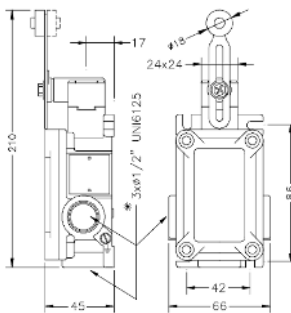
LS5121



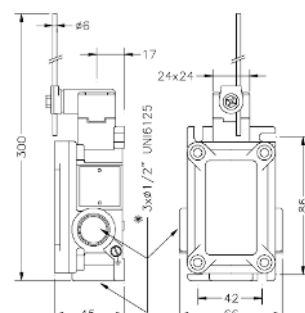
LS5130



LS5150



LS5155



LS5169

VITESSE MAXIMUM : 0,5 m/s
 Max speed
 FORCE MINIMUM : 8 N
 Min force
 FORCE MAXIMUM : 18 N
 Max force

LEGENDE
 Legenda

- OUVERTURE POSITIVE
Positive opening
- COURSE OUVERTURE POSITIVE
Positive opening travel
- POUSSÉ
Pushing
- TIRE
Releasing

