



## GUB-WE

### Protection mode:

Type of protection: II 2 GD EEx d IIC  
EEx d [ia] IIC  
Class of temperature: T6-T5-T4-T3  
Protection degree: IP 65 / IP 67\*

### Description:

The GUB-WE enclosures are square shaped and have an extension (E) and a threaded cover with circular porthole (W).

To contain electric, electronic equipments, I.S. devices and instruments to be visualized.



### Technical data:

**Ambient temperature:**  
-20 +60 °C (+40 / +50 °C).

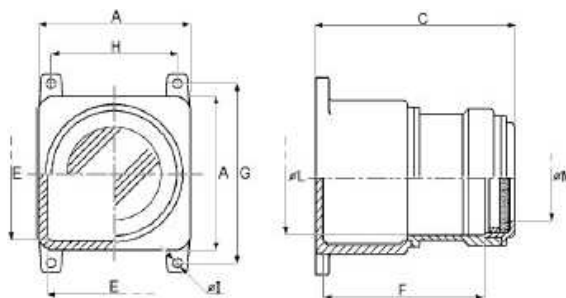
#### Materials:

Body and cover: aluminium alloy.  
Porthole: thermoresistant tempered glass.  
Screws: stainless steel.

#### On request:

\*IP 67 protection with o-ring.  
Galvanized steel equipment plate.  
Breathing / draining valve.  
Other epoxy painting colours.  
Inhibiting treatment for salt mist.

### Technical drawing:



| Type       | Dimensions (mm) |     |          |     |     | Glass | Fixing (mm) |     |        |
|------------|-----------------|-----|----------|-----|-----|-------|-------------|-----|--------|
|            | External        |     | Internal |     |     |       | øM          | G   | H      |
|            | A               | C   | E        | øL  | F   |       |             |     |        |
| GUB-WE 0   | 150             | 240 | 125      | 102 | 200 | 79    | 178         | 125 | 2 X 8  |
| GUB-WE 0H  | 150             | 280 | 125      | 102 | 235 | 79    | 178         | 125 | 2 X 8  |
| GUB-WE W 1 | 200             | 280 | 170      | 146 | 238 | 121   | 228         | 178 | 2 x 10 |
| GUB-WE 1H  | 200             | 320 | 170      | 146 | 277 | 121   | 228         | 178 | 2 x 10 |
| GUB-WE 3   | 250             | 365 | 225      | 190 | 318 | 160   | 285         | 228 | 4 x 10 |
| GUB-WE B3L | 360             | 390 | 325      | 300 | 330 | 260   | 395         | 318 | 4 x 10 |
| GUB-WE 3L  | 360             | 480 | 325      | 300 | 420 | 260   | 395         | 318 | 4 x 10 |
| GUB-WE 4   | 450             | 530 | 410      | 386 | 440 | 260   | 485         | 410 | 4 x 10 |
| GUB-WE 4A  | 450             | 460 | 410      | 386 | 375 | 260   | 485         | 410 | 4 x 10 |