



IM Atex Magnetic limit switch

Protection mode:

Type of protection: II 2GD EEx d IIC T6 / Ex tDA21
 Class of temperature: T6
 Protection degree: IP65
 Zones : 1-2-21-22

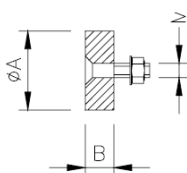
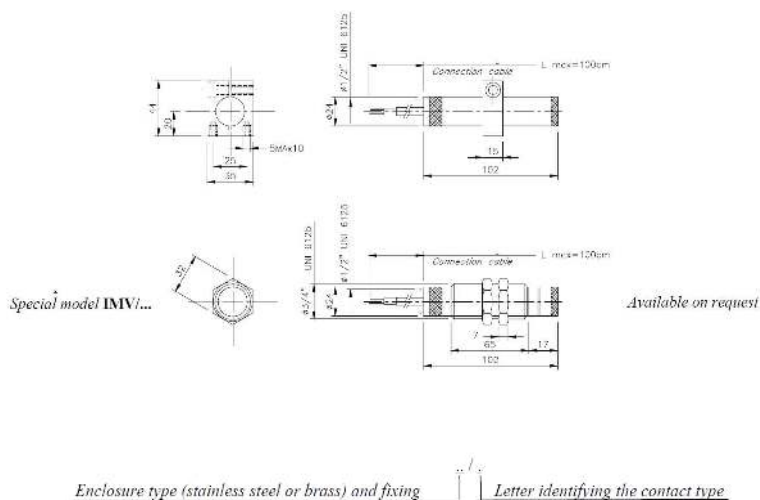


Description:

The IM magnetic limit switch is cylindrical shaped and has one contact element in deviation. The contact action is due to a permanent magnet type M. Standard cable length = 1m.
 To detect and count fast-moving objects, not having any direct contact with the limit switch.

Others lengths on request.

Technical drawing:



Contact	Diagram	Enclosure	Code	Weight (g.)
1 in deviation		In stainless steel AISI 316	IM / U	370
1 in deviation		In tropicalized brass	IMO / U	380

Code	Permanent magnet			Actuation distance	Weight (g.)
	A	B	MA		
M1	23	7	3x15	3 ÷ 7	15
M2	23	11	4x20	5 ÷ 12	20
M3	35	17	5x22	12 ÷ 25	60