



LS692 Key safety switch ATEX

Protection mode:

Type of protection: II 2 GD Ex d IIB + H2
 Class of temperature: T6
 Protection degree: IP65
 Amb Temp: -40/+85°C
 Zones : 1-2-21-22



Description:

LS692 Key safety switch with positive opening 1NO+1NC
 -The safety circuit must be connected to the NC contact 21-22 with the key plugged in.
 -The safety switches are fixed to the body of the machine, while the key is fixed to the protection
 - The head of the switch can be positioned on each of the four sides of the switch by unfastening the four fixing screws:8 different driving directions can be obtained.

Technical data:

Materials:

Enclosure made of GALSI 13 UNI 4514 light alloy externally coated with RAL 7030 epoxy.
 External bolts and screws made of stainless steel.

Other reference Standards

EN 60079-10, Zone 1 and 2, Directive ATEX 94/9/CE
 Group II Category 2GD.

Degree of pollution

Degree 3: IEC 947-5-1 and EN 60.947-5-1 Standards.

Maximum frequency operations

5/minute

Mechanical endurance operations

1.000.000

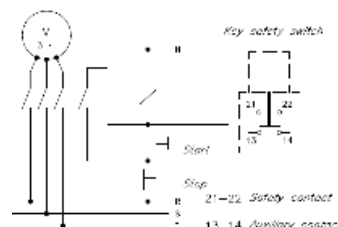
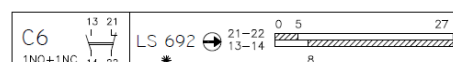
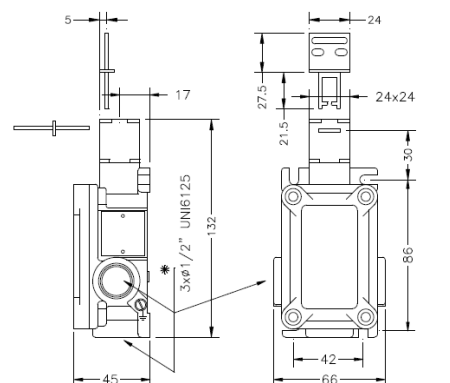
Maximum actuation speed

0.5 m/second

Contact blocks

Rated thermal current: Ith 10A
 Rated insulation voltage: Ui 500Vac 600Vdc
 Protection against short circuits: Fuse 10A
 Conductor minimum section: 1.5 mmq
 Current maximum density: 5A/mmq

Technical drawings:



Alternate current AC15 (50/60Hz)				
Voltage (V)	24	130	240	400
Intensity (A)	10	5.5	3	1.8
Direct current DC13				
Voltage (V)	24	110	250	
Intensity (A)	2.8	0.6	0.27	

