



MJB Range

Protection mode:

Type of protection: II 2G EEx e II
 Class dof temperature: T6
 Protection degree: IP66/67*

Description:

The MJB range offers a simple and effective means of connecting cables or equipment, and is suitable for voltages up to a maximum of **8.3 kV**. **Max size cable 120mm²**



Technical data:

These are the standard sizes depending on maximum operating voltage and conductor sizes although custom sizes can be manufactured to special order. Enclosure tested to the Shell/ERA deluge specification, heavy duty construction, padlock facility and internal/external earth stud fitted as standard. All hazardous area versions are ATEX certified using the latest standards and are suitable for operation in a Category 2/Zone 1 area and Category 3/Zone 2 area.

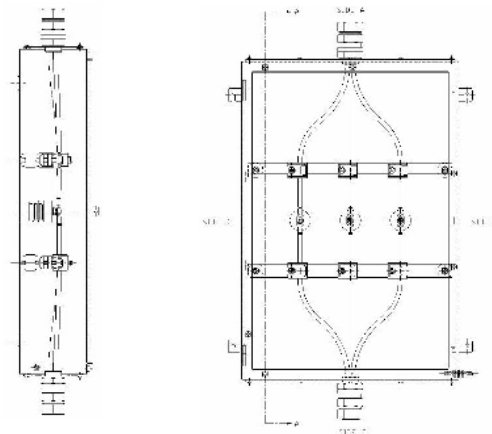
Amb. Temp:

-20° to +40°C (-4°F to +176°F)
 -50° to +65°C (-58° to +149°F) on request

Materials:

Mild steel and stainless steel
 *on request

Technical drawing:



Width (mm) (Dimension B)	Height (mm) (Dimension A)	Depth (mm)	Dimensions C (mm)	Dimensions D (mm)	Power Rating (W) Dissipated	Maximum Voltage (kV)	Maximum Ways	Max. Conductor Size (mm ²)
510	510	200/300	560	360	16	6,6	3	120
510	510	300	560	360	16	8,3	3	35
510	780	200/300	560	580	23	6,6	3	120
510	780	300	560	580	23	8,3	3	35
650	950	200/300	700	750	33	6,6	4	240
650	950	300	700	750	33	8,3	4	240
800	1250	200/300	850	1050	50	6,6	4	240
800	1250	200/300	850	1050	50	8,3	4	240