



Reducers RE series

Protection mode:

Type of protection: II 2GD EEx d IIC

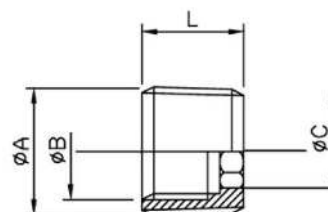


Description:

The rings reducers male-female serie RE ... are made of zinc plated steel

Thread: UNI 6125 (ISO 7/1)

On request: Light alloy or stainless steel



Type	Dimensions (mm)				Weight (g)	CEI UNEL
	Max A"	Min B"	Min C	L		95122
RE 21	3/4	1/2	14	20	40	RA 21
RE 31	1	1/2	14	23	90	RA 31
RE 32	1	3/4	19	23	55	RA 32
RE 41	1.1/4	1/2	14	26	180	-
RE 42	1.1/4	3/4	19	26	155	-
RE 43	1.1/4	1	24	26	90	-
RE 51	1.1/2	1/2	13	26	270	RA 51
RE 52	1.1/2	3/4	18	26	230	RA 52
RE 53	1.1/2	1	23	26	180	RA 53
RE 54	1.1/2	1.1/4	30	26	78	-
RE 61	2	1/2	18	27	485	-
RE 62	2	3/4	23	27	425	RA 62
RE 63	2	1	23	27	360	RA63
RE 64	2	1.1/4	34	27	115	-
RE 65	2	1.1/2	44	27	200	RA 65
RE 72	2.1/2	3/4	20	30	170	-
RE 73	2.1/2	1	26	30	170	-
RE 74	2.1/2	1.1/4	34	30	172	-
RE 75	2.1/2	1.1/2	39	30	210	-
RE 76	2.1/2	2	56	30	400	-
RE 82	3	3/4	18	30	215	-
RE 83	3	1	23	30	225	-
RE 85	3	1.1/2	35	30	255	RA 85
RE 86	3	2	56	30	635	RA 86
RE 87	3	2.1/2	70	30	390	-
RE 93	4	1	23	35		-
RE 94	4	1.1/4	30	35		-
RE 95	4	1.1/2	35	35		-
RE 96	4	2	40	35		RA 96
RE97	4	2.1/2	52	35		-
RE98	4	3	65	35		RA 98