



SFC16CTM1500 – ATEX Antenna GPS

Mode of protection:

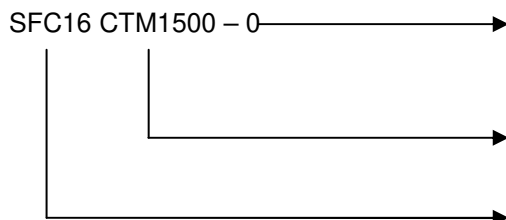
Type of protection: II 2G Ex d IIB
 Class of temperature: T5
 Ambient temp: -20/+40°C
 Zones: 1-2

Description:

ATEX antenna GPS 1,575.42MHz for gas zones (1 & 2).
 Lightweight and compact, body in aluminum alloy, antenna in
 nickel plated brass. Unarmoured cable gland M20 kit in nickel
 plated brass (seals 5.5/8 - 8/10.5 - 10.5/13mm).
 TNC female connector. Hazardous tank level monitoring,
 offshore platforms, chemical processing, power plants...



References:



Length of cable

0 : without cable
 5 : 5 meters of cable
 10 : 10 meters of cable

Antenna

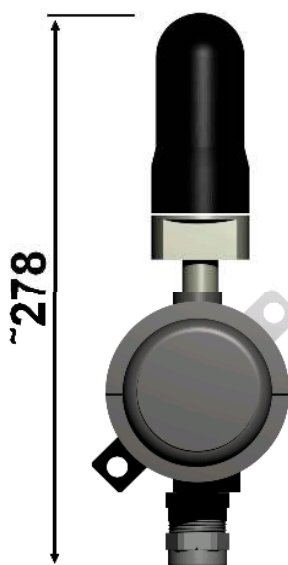
1,575.42MHz

Enclosure model

SFC16

SFC16CTM1500 1,575.42MHz

Approx height (mm):



Other models on request:

SFC16CTM800 Dual band 824-896 MHz & 1850-1990 MHz

SFC16CTM801 Dual band 801-940 MHz & 1901-2000 MHz

SFC16CTM900 915 MHz

SFC16CTM5000 5.0 GHz

SFC16CTM401 450MHz to 470MHz

SFC16CTM2400 2.4GHz

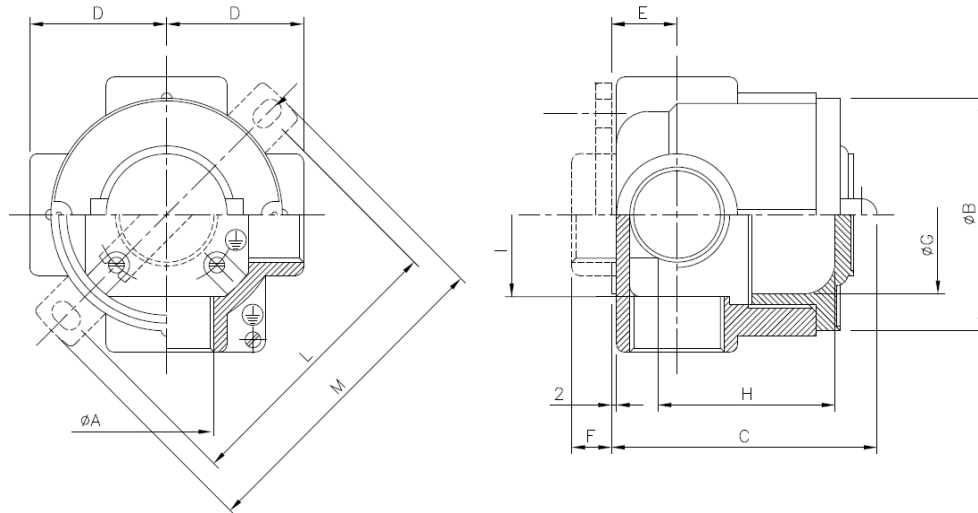
Antenna technicals data :

- Frequency: 1,575.42MHz
- Impedance: 50Ω
- Gain: 0.0 dBi
- Max Power: 2 Watts
- Connector : female TNC



SFC16CTM1500 – ATEX Antenna GPS

Drawing:



Enclosure dimensions	øA	Dimensions externe (mm)					Dimensions interne (mm)			Fixation		Poids (g)
		External dimensions (mm)					Internal dimensions (mm)			Brackets		Weight (g)
		B	C	D	E	F	G	H	I	L	M	
SFC16CTM1500	M20	90	78	50	20	8	70	49	70	108	126	440

Example with furniture cable

