



## SFC16CTM900 – ATEX GSM Antenna

### Mode of protection:

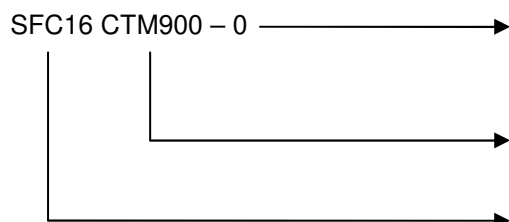
Type of protection: II 2G Ex d IIB  
 Class of temperature: T6  
 Ambient temp: -20/+40°C  
 Zones: 1-2

### Description:

The CTM-Series of antennas are designed for use in “Hazardous-Classified” and Industrial-Hardened applications. The antennas are omni-directional with 2.0 dBi gain and designed for flexible mounting with an M20 thread. The mounting base is made of heavy nickel-plated brass with an integrated TNC coaxial connector for ease of installation. The radome is optimized for rugged industrial applications while maintaining maximum radio frequency transmission and reception efficiency. Unarmoured cable gland M20 kit in nickel plated brass (seals 5.5/8 - 8/10.5 - 10.5/13mm).



### References:



#### Length of cable

0 : without cable  
 5 : 5 meters of cable  
 10 : 10 meters of cable

#### Antenna

902-928MHz

#### Enclosure model

SFC16

SFC16CTM900 902-928MHz

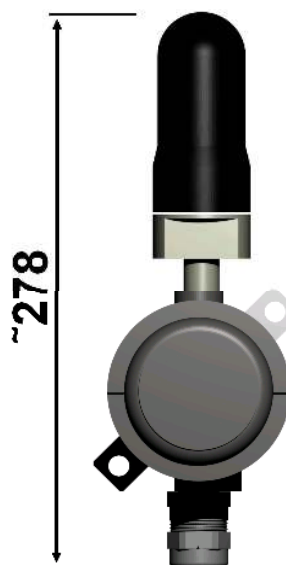
### Approx height (mm):

#### Other models on request:

- SFC16CTM800 Dual band 824-896 MHz & 1850-1990 MHz
- SFC16CTM801 Dual band 801-940 MHz & 1901-2000 MHz
- SFC16CTM2400 2.4 GHz
- SFC16CTM5000 5.0 GHz
- SFC16CTM401 450MHz to 470MHz
- SFC16CTM1500 1,575.42MHz

### Antenna technicals data :

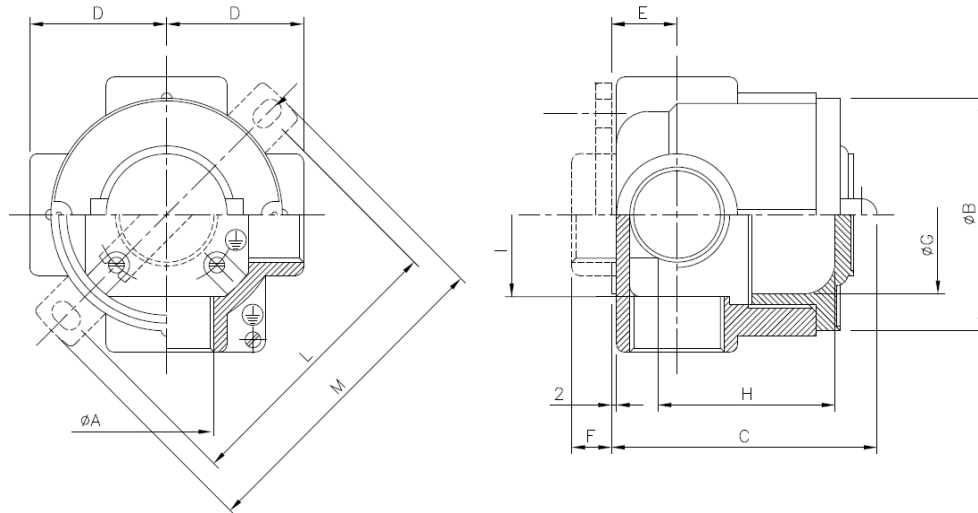
- Frequencies: 902-928MHz
- UL listed & ATEX certified
- Internal seal fitting
- Custom frequencies available
- TNC connector
- Mounting: 20mm (M20) thread
- Rugged Nickel Plated Brass mounting base





## SFC16CTM900 – ATEX GSM Antenna

Drawing:



Enclosure dimensions	φA	Dimensions externe (mm)					Dimensions interne (mm)			Fixation		Poids (g)
		External dimensions (mm)					Internal dimensions (mm)			Brackets		Weight (g)
		B	C	D	E	F	G	H	I	L	M	
SFC16CTM900	M20	90	78	50	20	8	70	49	70	108	126	440

Example with furniture cable

