



Union series B

Protection mode:

Type of protection: II 2G Ex d IIB (IIC)
 Zones : 1-2
 Certificate: CESI 03 ATEX 301U

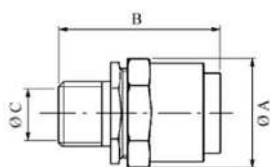


Description:

These three pieces unions series B...are made of zinc plated steel and composed of three elements that screw on and turn independently this allowing the connection of rigid parts.

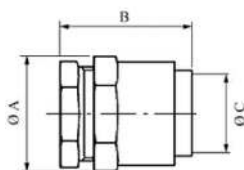
Threading UNI 6125 (ISO 7/1)

On request: AISI 304 stainless steel



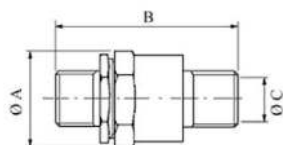
Male - female

Type	Dimensions (mm)					Weight (g)		CEI UNEL 95113
	ø	A	B-IIB	B-IIC	C	IIB	IIC	
BMF 1	1/2	35	62	74	13	225	270	BMF 1
BMF 2	3/4	40	62	74	19	275	350	BMF 2
BMF 3	1	50	74	84	24	380	480	BMF 3
BMF 4	1.1/4	61	80	-	32	700	840	-
BMF 5	1.1/2	70	80	86	38	970	1225	BMF 5
BMF 6	2	82	88	86	48	1290	1600	BMF 6
BMF 7	2.1/2	105	100	-	64	2180	2700	-
BMF 8	3	122	100	-	78	2850	3500	BMF 8
BMF 9	4	144	114	-	90			BMF 9



Female - female

Type	Dimensions (mm)					Weight (g)		CEI UNEL 95113
	ø	A	B-IIB	B-IIC	C	IIB	IIC	
BFF 1	1/2	35	48	60	13	180	225	BFF 1
BFF 2	3/4	40	48	60	19	240	315	BFF 2
BFF 3	1	50	52	64	24	290	390	BFF 3
BFF 4	1.1/4	61	56	-	32	550	890	-
BFF 5	1.1/2	70	62	64	38	840	1090	BFF 5
BFF 6	2	82	65	64	48	1130	1430	BFF 6
BFF 7	2.1/2	105	68	-	64	1800	2350	-
BFF 8	3	122	73	-	78	2250	2900	BFF 8
BFF 9	4	144	86	-	90			BFF 9



Male - male

Type	Dimensions (mm)					Weight (g)		CEI UNEL 95113
	ø	A	B-IIB	B-IIC	C	IIB	IIC	
BMM 1	1/2	35	80	-	13	250	300	-
BMM 2	3/4	40	80	-	19	330	410	-
BMM 3	1	50	97	-	24	475	580	-
BMM 5	1.1/2	70	107	-	38	1100	1350	-
BMM 6	2	82	112	-	48	1540	1850	-