



## VDR14 Breathing / draining valve

### Protection mode:

Type of protection: II 2 GD - EEx d IIC  
 Class of temperature: T6 / 85°C  
 Protection degree: IP 65

### Description:

The VDR14 breathing / draining valve has a body . 1/4" ISO 228 to be screwed on one entry; couplings fixed by loctite or similar.

Breathing / draining valve applicable on EJB, GUB boxes and certified enclosures.

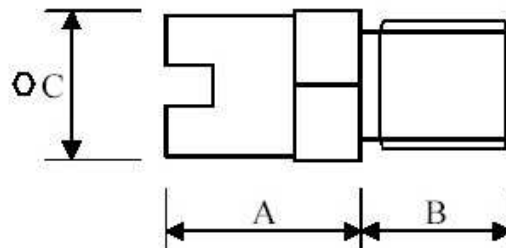


### Technical data:

**Material:**  
 Body: stainless steel.

**On request:**  
 3/8" ISO 7/1 version (VDR 38).

### Technical drawing:



### Dimensions table:

Type	Thread	Dimensions (mm)		
		A	B	C
VDR 14	1/4" ISO 228	19	15	15