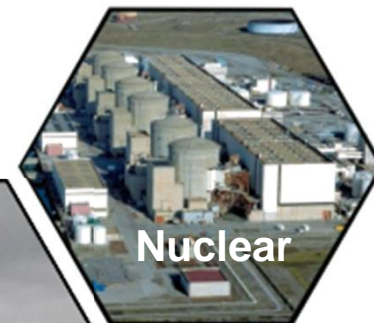


ELECTRICAL SOLUTIONS FOR HAZARDOUS ATMOSPHERES PANORAMA PRODUCTS & SOLUTIONS



Ex d ENCLOSURES



Aluminium
IIB / IIB+H²



AISI 304/316L IIB /
IIB+H²



Aluminium
IIC

Ex e JUNCTION BOXES



High voltage



AISI 304/316L IIC

Our Ex d enclosures:

- Cast aluminium
- Stainless steel
- Cast Iron
- Aluminox (silver ion treatment)
- With or without window
- For Gas and Dust zones
- Certifications ATEX, IEC Ex, GOSTR

Our Ex e junction boxes:

- Certifications ATEX, IECEx, GOSTR
- Instrumentation junction box
- Stainless steel AISI 304, 316L
- Up to 11kV, 630mm² max cable fault rated to 50kA for 1 sec.
- II2G Ex e II – T6 or T4 IP66/67

TUBING



atexSystem



Ex p PRESSURIZED



Pressurized cabinet
Ex px - Zone 1



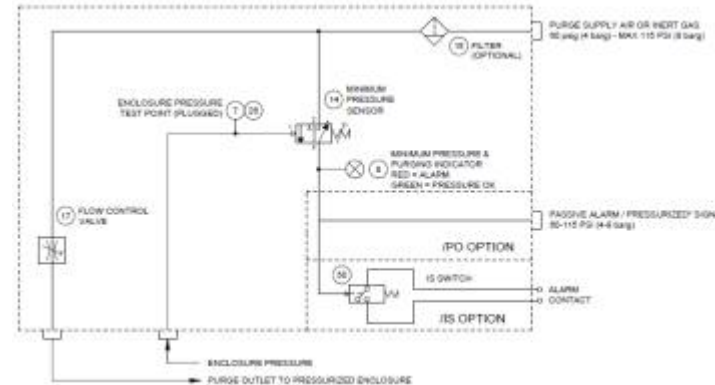
Purge for zone 1 cabinet



Pressurized cabinets
Ex pz - Zone 2



Purge for zone 2



Quick Access:

Easily open purged cabinets for maintenance in hazardous areas, the power will be switched off when the door is open.

Controls:

Windows: for viewing displays

HMI units

Operator interfaces: push buttons, switches, and annunciators.

Ex p can include heating & cooling:

Electric heating, Thermostats

Fan-driven heat exchangers

Vortex coolers



WIRELESS COMMUNICATION



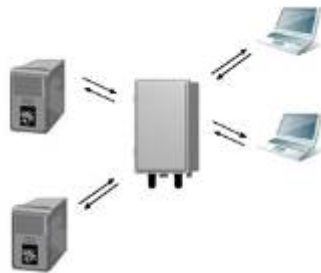
ATEX Certified access point



ATEX MESH Network



ATEX Talkie Walkie



ATEX Access Point network



ATEX Remote Antenna



**ARM-IO Radio Modem
868MHz**



Data Radio DX80 enclosure

FlexPower input options allow for 10 to 24V DC connection. Serial communication (RS232 or RS485) is user selectable. Built-in site survey mode enables rapid assessment of a location's RF transmission properties by one person; hands-free operation and rapid display updates enable efficient antenna placement optimization. Fully symmetric, bidirectional transceivers enable two-way communications and receive acknowledgements. FHSS radios operate and synchronize automatically; no user setup is required; Selectable network IDs reduce interference from collocated networks.

SECURITY / SURVEILLANCE / CONTROL



ATEX Access Control



ATEX Microwave Doppler Radar
Up to 30m range

Camera enclosures

- HDTV (Full HD 1080p @ 30fps)
- Intelligent Multi-Profile Sensor Management®
- 3G module, SIM card slot, wireless connectivity
- 1 DI/DO for External Alarm and Sensor Device/ TV out Connector Supported
- PoE (802.3at) / PoE (802.3af) / 12V power supply
- Aluminium alloy or stainless steel housing
- Tempered glass
- Canopy protection



Explosion-proof camera housing with windscreen wiper



Explosion-proof camera housing for thermal camera

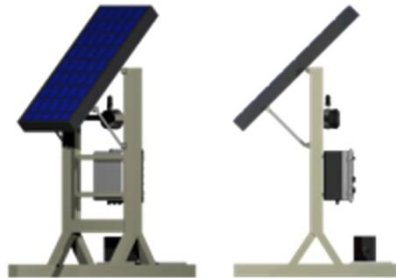


Camera day / night PTZ



Dual vision camera day / night & thermal

SOLAR / BATTERIES Ni-Cd / Lead Acid



Solar solutions skid
85 to 1000W/m²



Solar panel 85Wp ATEX
17V / 6A



Battery Ni-Cd
SAFT Sunica+

Battery SAFT Ni-Cd

Solar type Sunica+ 45Ah
to 1110Ah
Type SPH traction battery



Battery lead acid FIAMM,
SONNESCHEIN, EXIDE



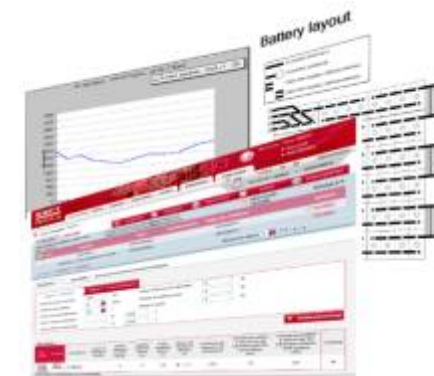
Battery box 18Ah C120



Battery box 400Ah C120



Battery box up to 1500Ah



LED

FLUORESCENT



18/48W LED with dimming sensor



Microwave sensor



Helideck LED
ATEX & OACI 30W



Fluorescent
Ex e 2GD IIC
2x18W / 2x36W

Light fixture specifications:
ATEX
EX II2GD Ex e IIC
EX II2G Ex d IIC

LED specifications:
5 year warranty
High efficiency
Operating temperature
-40/+55°C
LED lamps, LED spots,
LED floodlights
Certified ATEX, IEC Ex

Dialux Lighting calculation for your project.



LED spot
30/60W



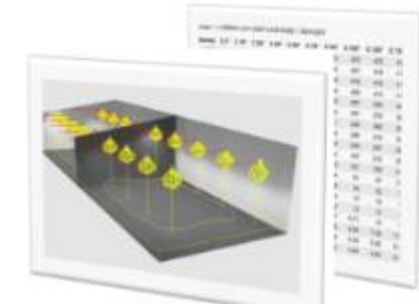
LED floodlight
120/150W



LED LIGHT
20-80W



Emergency light



FANS / HEATERS / CONVECTORS



Centrifugal Fan
Gas and Dust IIB IIC



Axial Fan
Gas and Dust IIB IIC



Water Heater Unit
Gas and Dust IIB



Electric Heater Unit
Gas and Dust IIB IIC



Convactor T4 / T3
Mono / Tri-phase up to 3000W

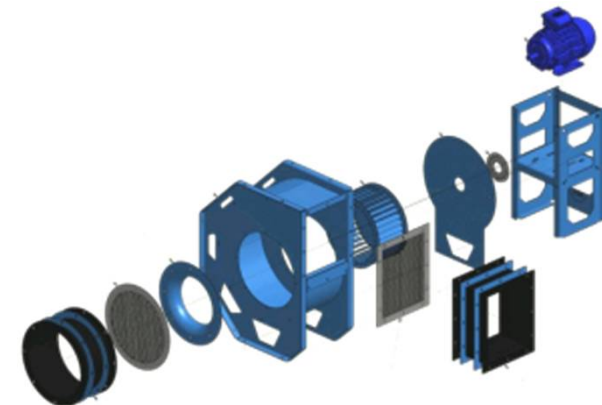
AIR CONDITIONERS



Air conditioner
Heater / Cooler
Custom design



BKF Air conditioner
5kW & 7kW / Liquid R22 or R410A
Reversible option possible



LIMIT SWITCHES



Limit Switches

Pushbutton roller, spring roll, lengthened roll lever...

Pushbutton series PB

Made of aluminium alloy,
Large choice of control and signalling units.

Components mounted on control box :

- Pushbutton (Green , Blue, Red, Yellow, White, Black)
- Emergency stop
- Emergency stop key lock
- Emergency stop break glass
- Switch 2 positions; Switch 2 positions key lock
- Switch 3 positions ; Switch 3 positions key lock
- LED lamps (Green , Blue, Red, Yellow, White)
- Potentiometer...

www.atex-system.com

CONTROL BOXES



Ex d pushbutton series, 1 to 4 elements



SMARTPHONES / MOBILES / TABLETS



ATEX Tablet Zones 1/21
Windows



ATEX Zones 1/21
Smartphone



ATEX Zones 1/21
Mobile phone



ATEX Zones 2/22
Mobile phone



ATEX Tablet Zones 1/21
Android

Head-mounted
display set zone 1/21



TRAINING PROGRAMS

Atex Level 1 - Beginner

Goals:

To obtain essential knowledge to work safely in hazardous location (ATEX/EX)

Intended public:

Any one

Prerequisite:

None

Contents:

Basic training for staff operating in Ex zone

1. What is an atex
2. When atex is present
3. When an explosion of atex can occur
4. What are the essential flammable data?
5. How to prevent an explosion
6. Ex types of protection (ATEX / IEC Ex)
7. Rules of operations in Hazardous locations

Video, powerpoint, quizz

Atex Level 2 - Knowledge updates

Goals:

To obtain essential and up to date knowledge to safely work where explosive atmospheres are present

Intended public:

Any person, operating in workplaces, on equipment covered by ATEX/ IEC Ex approvals

Prerequisite

Electricity basic knowledge

Contents:

1. Basic rules regarding ATEX (gas and combustible dusts) and hazardous areas
2. The 99/92 Directive regarding European legislation for workers operating in hazardous locations (implemented in work code)
3. The ATEX Directive 1994/9EC or 2014/34UE regarding European legislation for equipment intended to be used in explosive atmospheres. IEC Ex scheme.
4. General overview of electrical types of protection
5. Main rules for maintenance and installation of electrical equipment in hazardous locations
6. Equipment marking

atexSystem



CONTACT US



Global Headquarters

Platon Koptilov

p.koptilov@atex-system.com

Africa & Middle East

Karim Rezkallah

k.rezkallah@atex-system.com

